



# SARA

Society of American Registered Architects

## 2004 STUDENT DESIGN COMPETITION

PROJECT NAME \_\_\_\_\_

**PROJECT STATEMENT FORM** (Must be maximum of **250 typed** words on **this sheet only**)

The majority of senior citizens living within California's San Luis Obispo County are unwilling to leave the security of their private homes and move into the existing assisted living communities. These senior citizens are affluent, successful residents desiring both assisted and unassisted living communities that are not designed within the classic stigmas of "affordability" and "necessity". Foothill Senior Living Center successfully accommodates this end user that is not currently accounted for in this county.

Foothill Senior Living Center is designed to meet end user needs. These needs include: spacious floor plans, enhanced amenities, lush landscaping, widened hallways, and superior finishes. At street level, the project is supported by a network of retail spaces oriented towards both the senior community and the surrounding urban infrastructure.

Greater attention was placed upon sustainability and climatic decisions due to the ability to exceed typical budgetary limitations. As a whole, the project follows Buckminster Fuller's idea of "Responsible Resource Management". The climate response strategies include: solar roof tiles for heating/cooling/energy, recycling by composting and reusing gray water, and conservation through water harvesting.

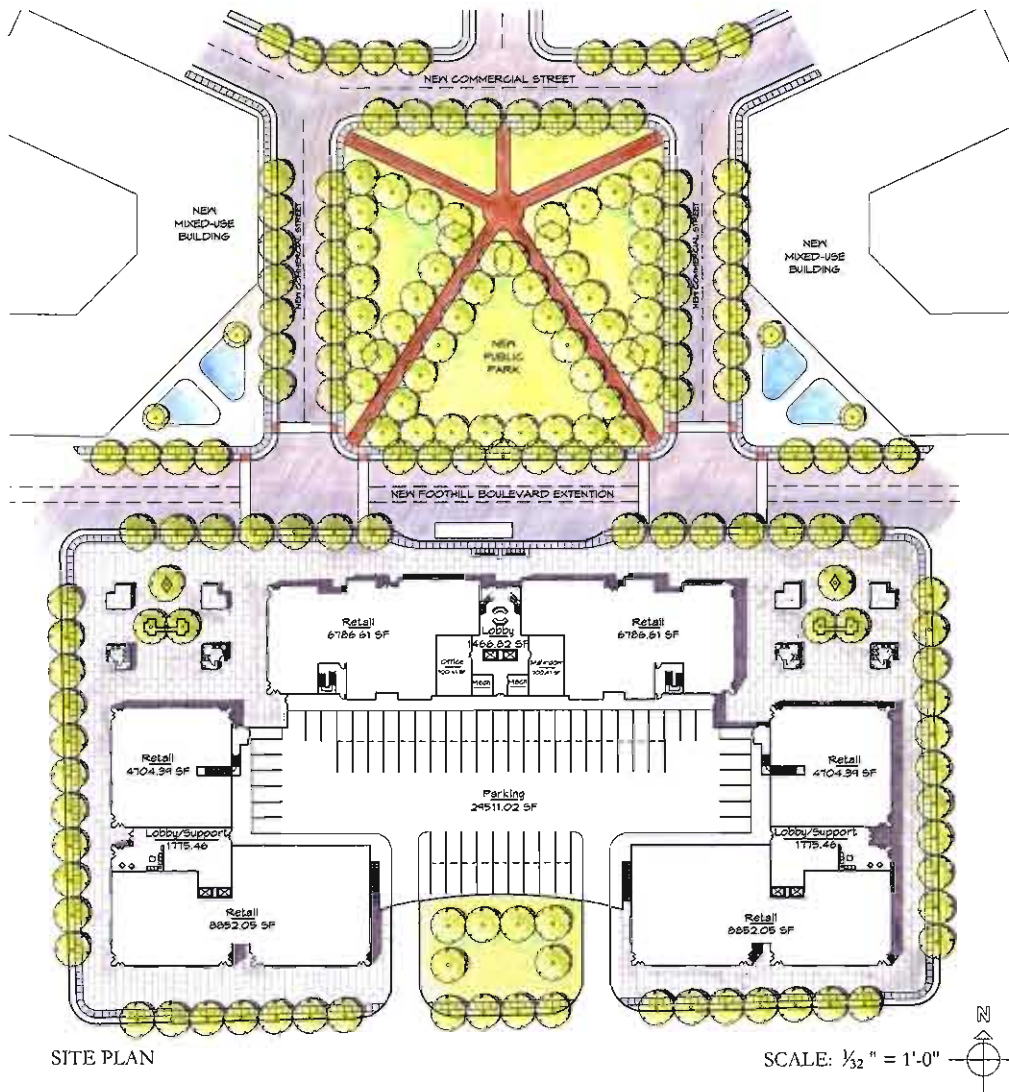
Structurally, the complex utilizes a system of post-tensioned concrete slabs and steel frame construction set on a Type-1A first floor concrete podium. While initially expensive, post-tensioning provides for greater spans and when combined with a steel moment frame exterior/shear wall interior, allows for increased flexibility and room for change. In the end, this development can efficiently support the anticipated dead-load, live-load, and seismic forces typical to this occupancy and location

**RETURN FORM AND SLIDES TO:**

**SOCIETY OF AMERICAN REGISTERED ARCHITECTS**  
**2004 SARA STUDENT DESIGN PROGRAM**  
P.O. Box 280  
NEWPORT, TN 37822

FOR SARA USE ONLY

NAME	PROJECT REG. NO.
------	------------------



**KEY PLANS STATISTICS**



**PROJECT:** Mixed-Use - Retail/Senior Living

**CLIENT:** City of San Luis Obispo

**PROJECT ADDRESS:** 1 New Foothill Boulevard  
San Luis Obispo, CA 93401

**LEGAL DESCRIPTION:** City of San Luis Obispo  
County of San Luis Obispo, Ca

**ZONING:** MU - Mixed-Use

**SITE:** 2.98± Acres (130,000 sq ft)

**PROJECT DATA:**

	Retail Total	
Retail	40690 sq ft	40690 sq ft
Residences	Unit A (134 @ 705 sq ft)	94470 sq ft
	Unit B (24 @ 715 sq ft)	17160 sq ft
	Unit C (18 @ 640 sq ft)	11520 sq ft
	Unit D (6 @ 825 sq ft)	4950 sq ft
	<b>Residences Total</b>	<b>127900 sq ft</b>
Residence Support	Lobby & Support	10635 sq ft
	Dinning	3850 sq ft
	Offices	1530 sq ft
	<b>Support Total</b>	<b>16015 sq ft</b>
Uninhabitable Space	Parking Garage	29511 sq ft
<b>Total</b>		<b>217116 sq ft</b>

**MAXIMUM HEIGHT:** Allowed: 80' ±

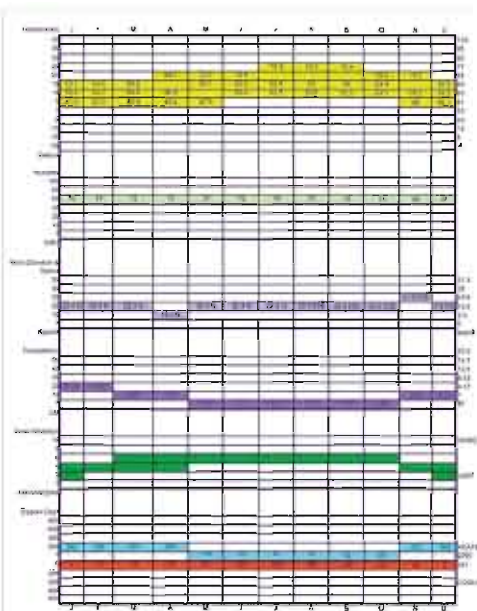
**KEY PLAN LEGEND**

- Retail
- Senior Living Units
- Assisted Senior Living
- Alzheimer's Care Units
- Senior Center Support
- Parking

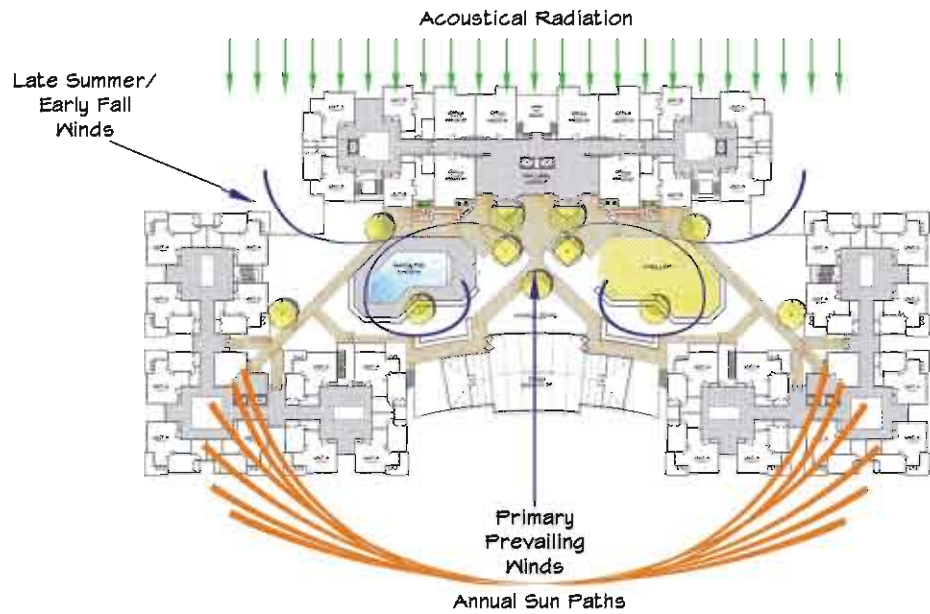
**FOOTHILL SENIOR LIVING CENTER**

TRAVIS W. HAMERA

ARCH 453 - SPRING 2004 - CALPOLY, SAN LUIS OBISPO



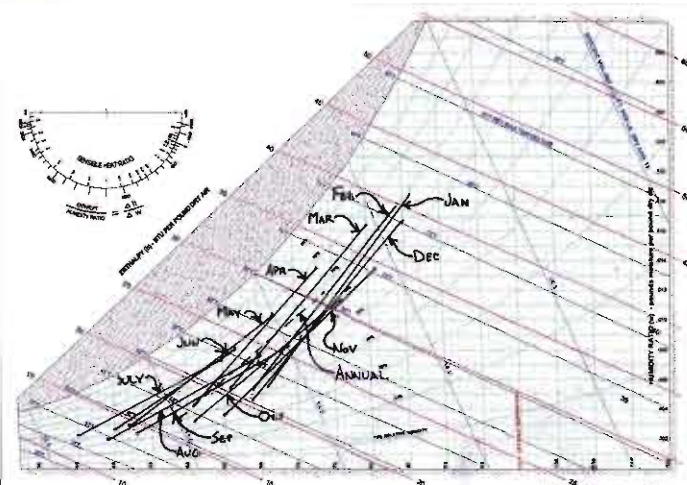
**CLIMATE DATA CHART**



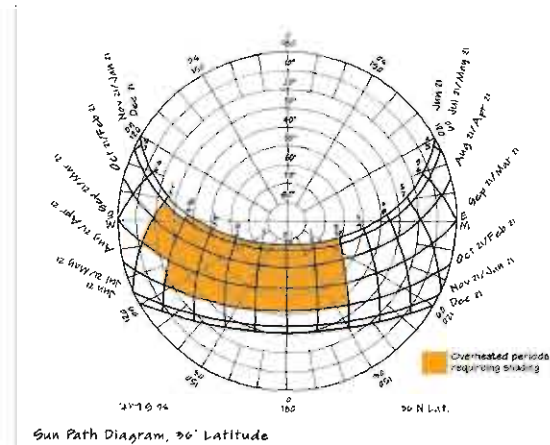
**2 HOUR TEMPS(ERSATZ)** LOCATION: Are temperatures in Degrees F?(Y/N)

Month	1	2	3	4	5	6	7	8	9	10	11	12
Jan	45	48	51	54	57	60	63	66	69	72	75	78
Feb	46	49	52	55	58	61	64	67	70	73	76	79
Mar	47	50	53	56	59	62	65	68	71	74	77	80
Apr	48	51	54	57	60	63	66	69	72	75	78	81
May	49	52	55	58	61	64	67	70	73	76	79	82
Jun	50	53	56	59	62	65	68	71	74	77	80	83
Jul	51	54	57	60	63	66	69	72	75	78	81	84
Aug	52	55	58	61	64	67	70	73	76	79	82	85
Sep	53	56	59	62	65	68	71	74	77	80	83	86
Oct	54	57	60	63	66	69	72	75	78	81	84	87
Nov	55	58	61	64	67	70	73	76	79	82	85	88
Dec	56	59	62	65	68	71	74	77	80	83	86	89

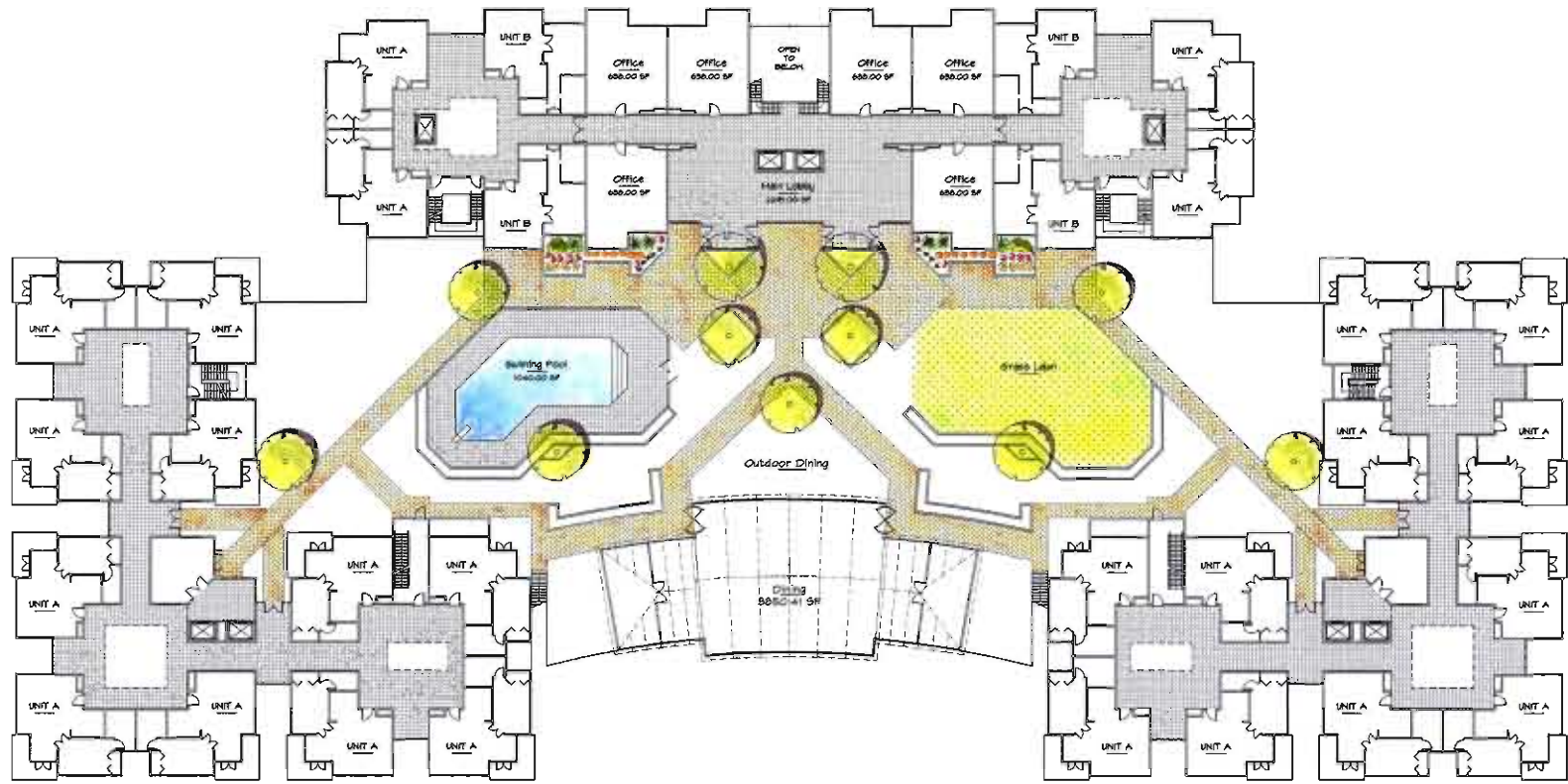
**OVERHEATED PERIOD CHART**



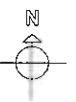
**PSYCHOMETRIC CHART**



**SUN PATH/SHADING MASK**



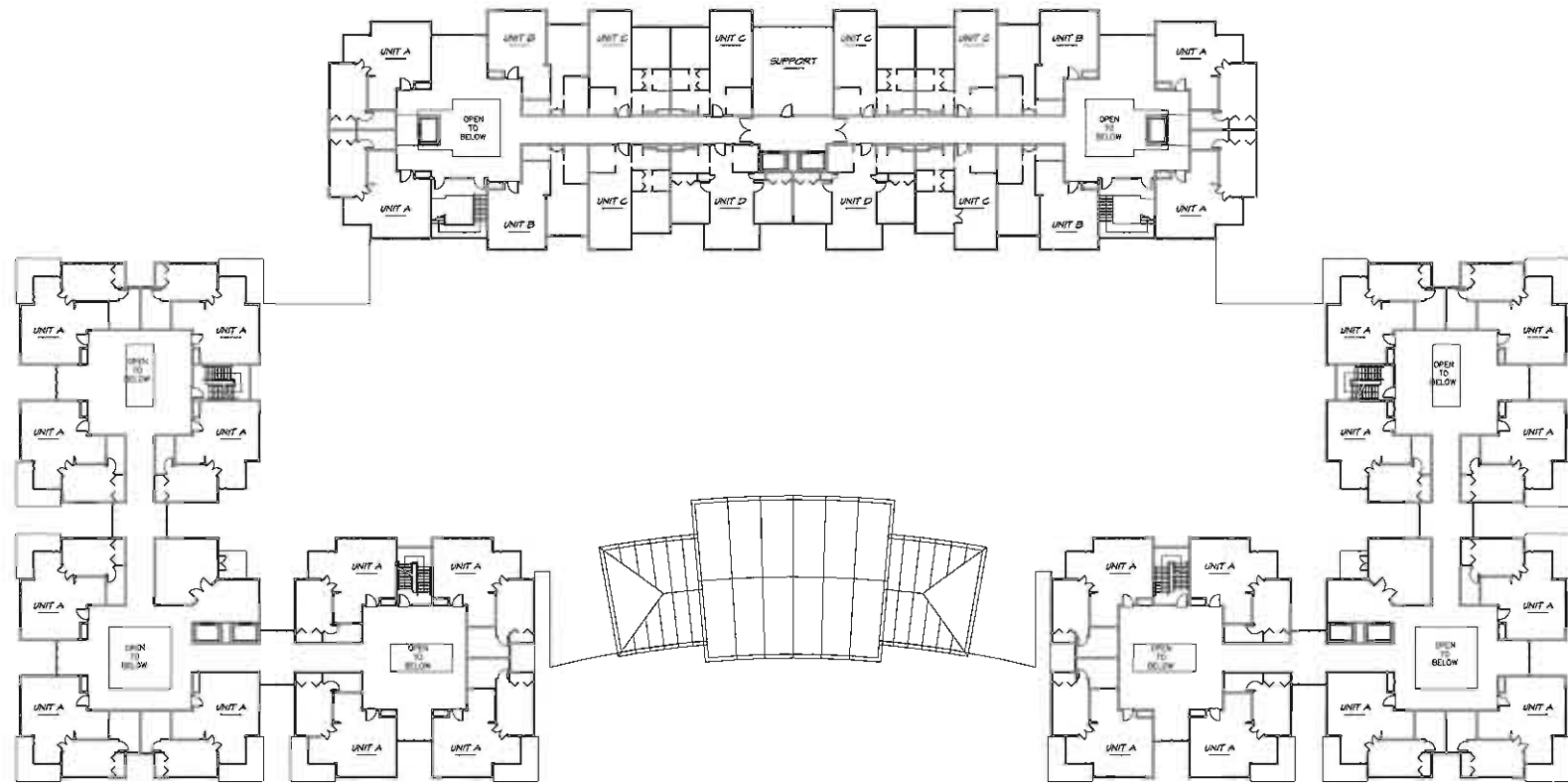
PODIUM LEVEL FLOOR PLAN

SCALE:  $\frac{1}{16}'' = 1'-0''$  

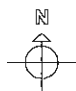
FOOTHILL SENIOR LIVING CENTER

TRAVIS W. HAMERA

ARCH 453 - SPRING 2004 - CALPOLY, SAN LUIS OBISPO



TYPICAL UPPER LEVEL FLOOR PLAN

SCALE:  $\frac{1}{16}'' = 1'-0''$  

FOOTHILL SENIOR LIVING CENTER

TRAVIS W. HAMERA

ARCH 453 - SPRING 2004 - CALPOLY, SAN LUIS OBISPO



NORTH ELEVATION

SCALE: 1/16" = 1'-0"



WEST ELEVATION

SCALE: 1/16" = 1'-0"



SOUTH ELEVATION

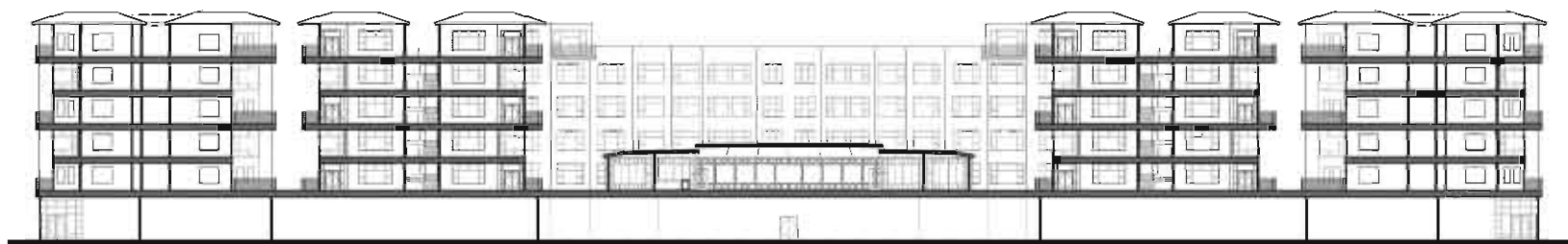
SCALE: 1/16" = 1'-0"

FOOTHILL SENIOR LIVING CENTER



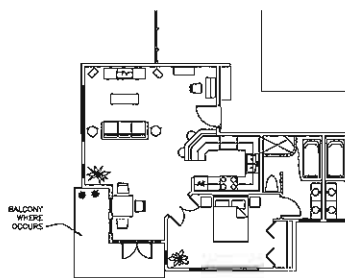
BUILDING SECTION THROUGH MAIN LOBBY

SCALE: 1/16" = 1'-0"



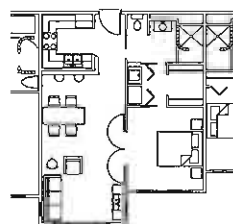
EAST/WEST BUILDING SECTION

SCALE: 1/16" = 1'-0"



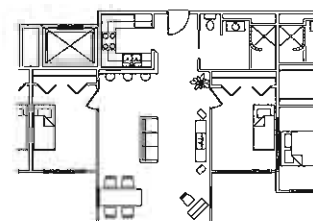
TYPICAL CORNER UNIT

SCALE: 1/8" = 1'-0"



TYPICAL 1-BEDROOM UNIT

SCALE: 1/8" = 1'-0"



TYPICAL 2-BEDROOM UNIT

SCALE: 1/8" = 1'-0"

FOOTHILL SENIOR LIVING CENTER

TRAVIS W. HAMERA

ARCH 453 - SPRING 2004 - CALPOLY, SAN LUIS OBISPO



FOOTHILL SENIOR LIVING CENTER

TRAVIS W. HAMERA

View Of North Facing Facade

ARCH 453 - SPRING 2004 - CALPOLY, SAN LUIS OBISPO



FOOTHILL SENIOR LIVING CENTER

TRAVIS W. HAMERA

View Of South Facing Facade

ARCH 453 - SPRING 2004 - CALPOLY, SAN LUIS OBISPO

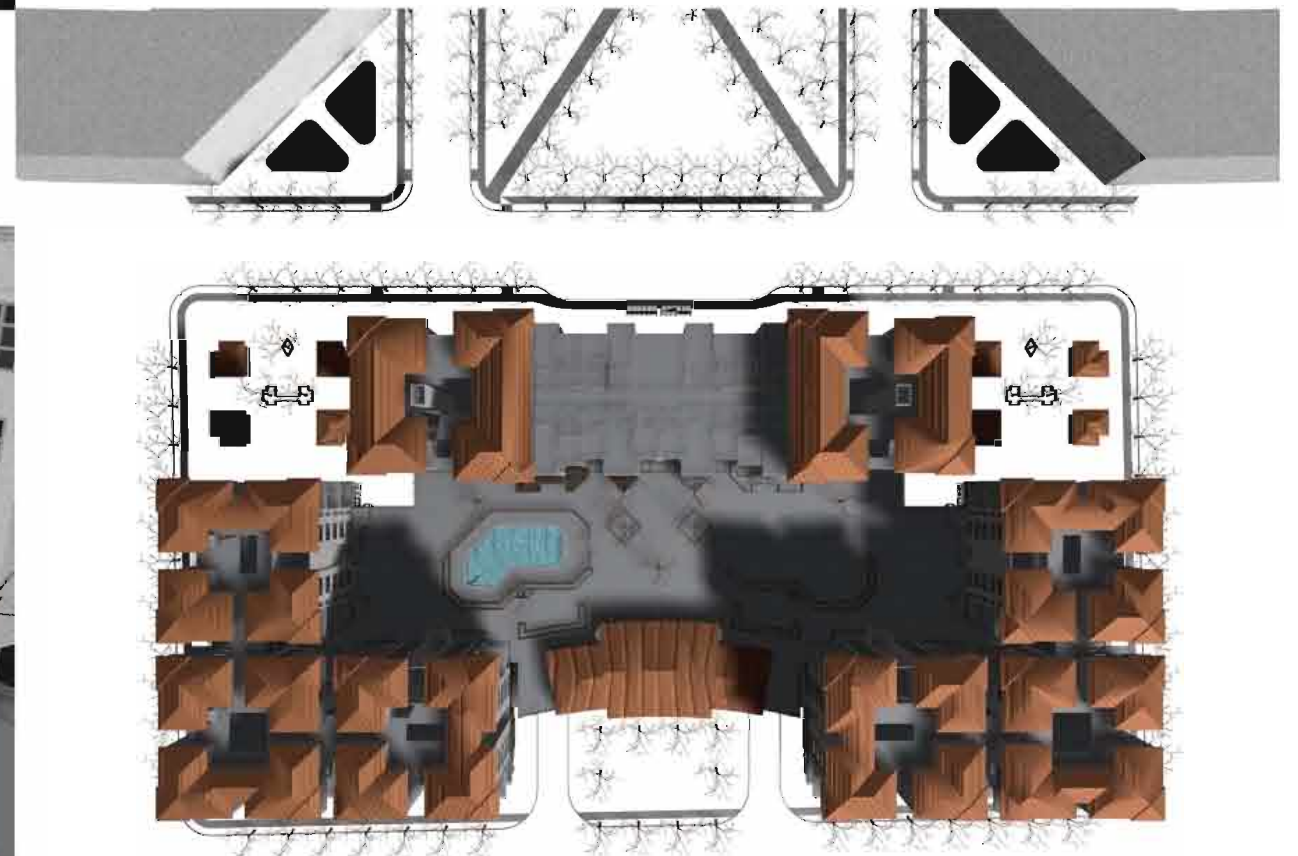


FOOTHILL SENIOR LIVING CENTER

TRAVIS W. HAMERA

View Of Podium From Balcony

ARCH 453 - SPRING 2004 - CALPOLY, SAN LUIS OBISPO



FOOTHILL SENIOR LIVING CENTER

TRAVIS W. HAMERA

Bird's Eye View

ARCH 453 - SPRING 2004 - CALPOLY, SAN LUIS OBISPO