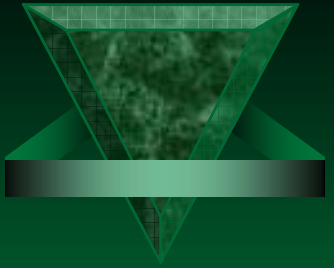


The Courthouse SPORTS COMPLEX

Arroyo Grande, California

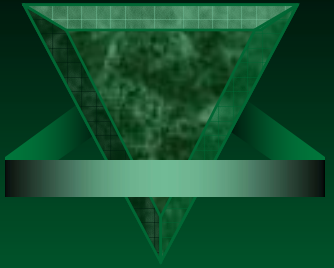


Fall 2005



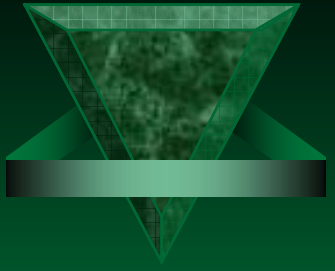
THE COURTHOUSE

- ✓ To provide a facility that will nurture and enhance community togetherness while families can practice, play and enjoy life through recreation. Multiple sports and activities will offer a culture of learning, camaraderie and sportsmanship.



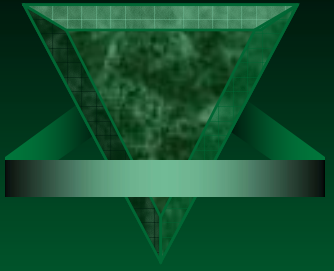
Goals & Objectives

- ✓ Multi-Purpose Community Center:
 - Community Activities
 - Senior Activities
 - Volleyball
 - Fitness Classes
 - Basketball
 - Special Events



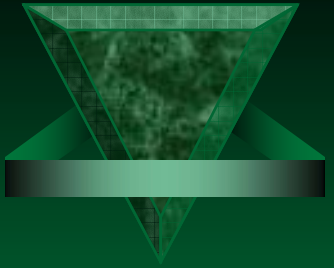
Marketing Summary

- ✓ Marketing to Kids & Parents
- ✓ Appeal to Kids by emphasizing...
 - *Aspect of Fun*
 - *Quality Competition*
 - *Making Friends*
 - *Ability Enhancement*



Marketing Summary

- ▼ Appeal to Seniors by Emphasizing...
 - *Accessible Facility*
 - *Gathering Place*
 - *Exercise Opportunities*



Marketing Summary

- ✓ Market to Parents
- ✓ Appeal to Parents by Emphasizing...
 - Exercise*
 - Building Character*
 - Credibility & Professionalism*
 - Getting to the Next Level*



Programs & Classes

All Ages Male & Female

▼ **Adults, Seniors & Youth**

– **Fitness**

- **Aerobics, Yoga**

– **Health**

- **Nutrition, Exercise, Self Defense**

– **Sports Programs**

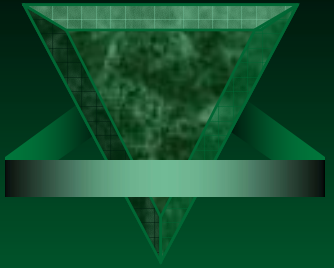
- **Camps, Tournaments, Leagues, After School Programs**

– **Dance Classes**

- **Adult**

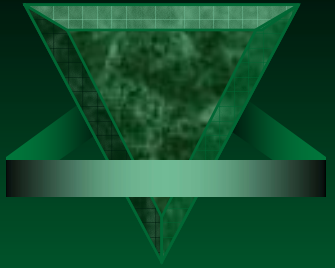
– **Special Events**

- **Youth Dances**



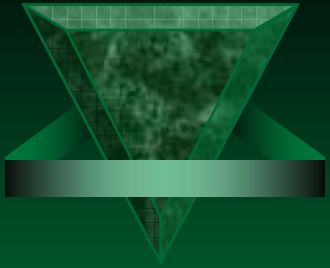
CITY BENEFITS

- ✔ Help Alleviate Scheduling Conflicts
- ✔ Provide Facility to Ease overcrowding
- ✔ New opportunities for recreation
- ✔ Economic impact for the Village of AG
- ✔ Create jobs for the youth
- ✔ Keep revenue in the City of Arroyo Grande
- ✔ Enhance community spirit



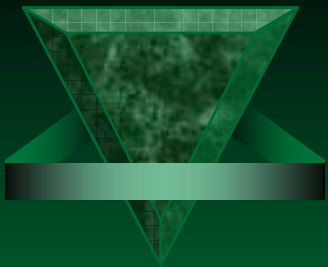
CITY SPONSORED ACTIVITIES

- Court Availability
 - 5Cities Youth B-Ball
 - Leagues & Practices
- ▼ Volleyball
 - Leagues & Open Gym
- ▼ Senior Programs
 - Aerobics, Training
- ▼ Special Events
 - Dances
 - Corporate Outings
- ▼ Adult Activities
- ▼ Community Events
 - Educational
 - Recreational



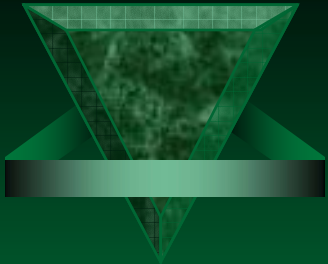
PROVIDED ACTIVITIES

- ✓ Training Leagues
 - Basketball
 - Volleyball
 - Indoor Soccer
 - Physical Conditioning
- ✓ Leagues
 - High School, Co-ed, Adult, Youth
- ✓ Tournaments
 - 5 on 5, 3 on 3, shooting, seasonal & weekend
- ✓ Parent Classes
 - Skill Teaching
- ✓ Skill Instruction
 - Individ., Group, Team
- ✓ Referees
- ✓ Shooting Classes
- ✓ Camps
 - Weekly & summer

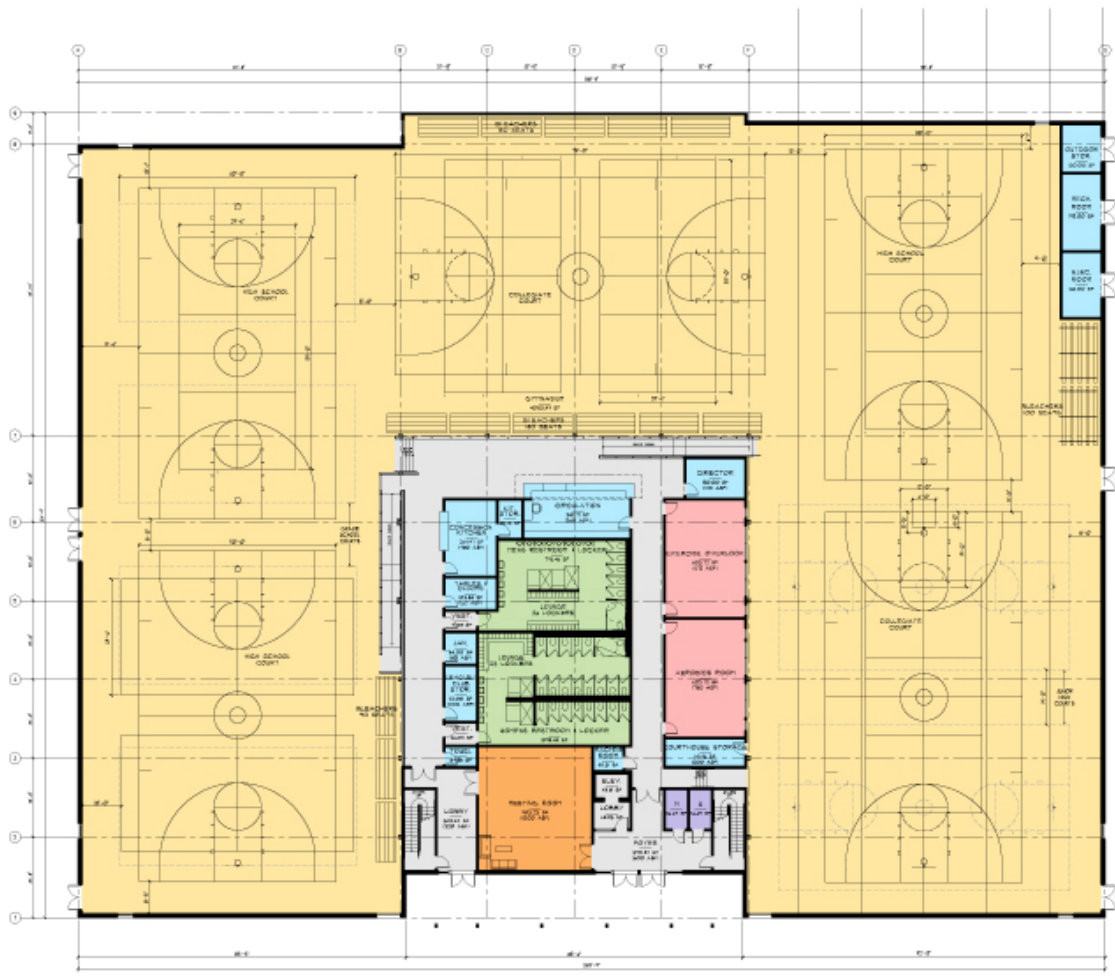


Site Plan



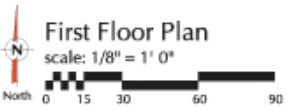


1st Floor Plan

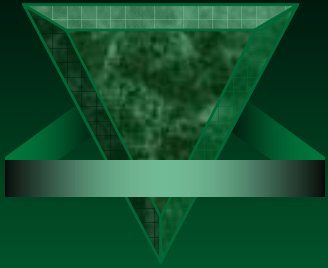


FIRST FLOOR AREA: 51,552 S.F.
 GYM: 40,154 S.F.
 SUPPORT: 10,498 S.F.
 MEETING ROOM: 903 S.F.
 SECOND FLOOR AREA: 1,050 S.F.
 LEASABLE SPACE: 4,939 S.F.
 TOTAL BUILDING AREA: 58,402 S.F.

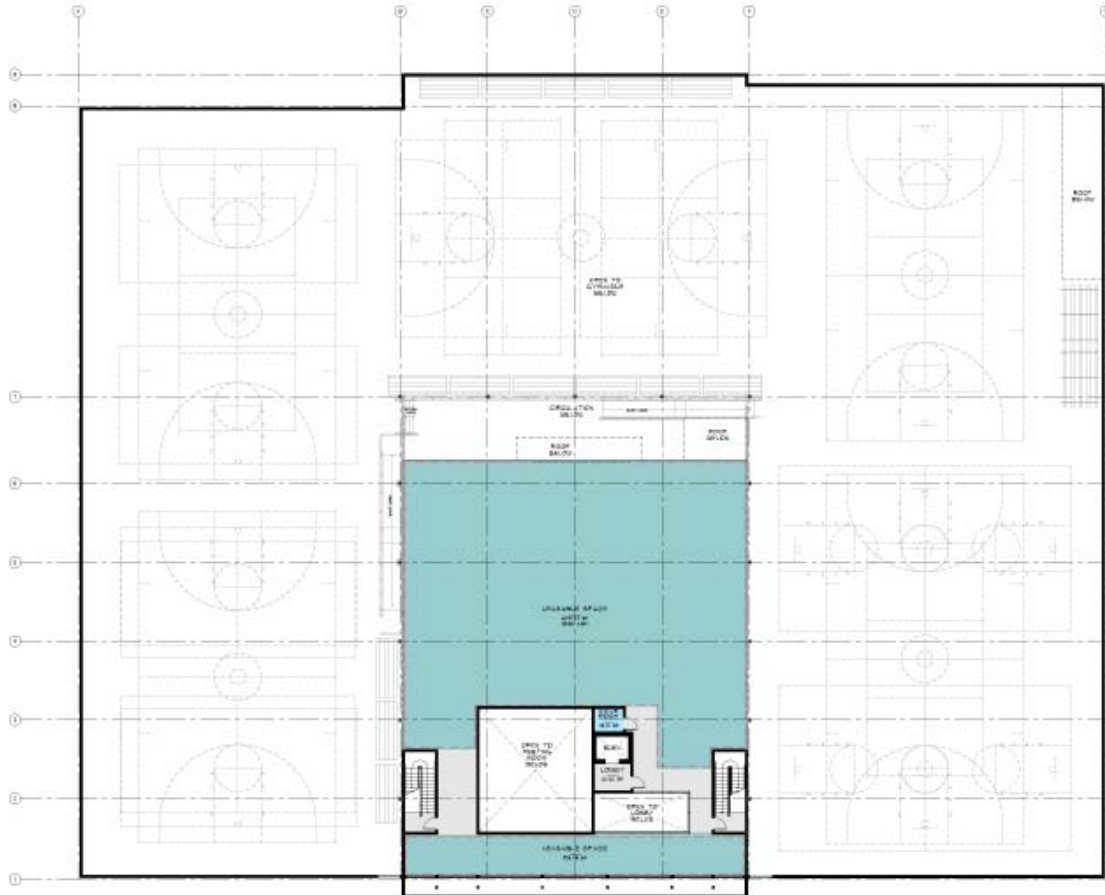
OCCUPANCY LEGEND	
[Yellow Box]	GYM
[Light Blue Box]	LEASABLE SPACE
[Orange Box]	MEETING ROOM
[Light Green Box]	SUPPORT
[Light Blue Box]	LOCKER ROOMS
[Pink Box]	EXERCISE ROOMS
[Purple Box]	RESTROOM
[Grey Box]	CIRCULATION



2 HIGH SCHOOL - BASKETBALL	84'-0" X 50'-0"	1 COLLEGIATE NCAA - BASKETBALL	74'-0" X 50'-0"	1 HIGH SCHOOL - BASKETBALL	84'-0" X 50'-0"
4 GRADE SCHOOL - BASKETBALL	40'-0" X 30'-0"	2 COLLEGIATE OR HIGH SCHOOL - VOLLEYBALL		3 JUNIOR HIGH SCHOOL - BASKETBALL	74'-0" X 42'-0"
3 COLLEGIATE OR HIGH SCHOOL - VOLLEYBALL	59'-0" X 31'-4"			2 COLLEGIATE OR HIGH SCHOOL - VOLLEYBALL	84'-0" X 25'-4"
				1 COLLEGIATE OR NCAA BASKETBALL	74'-0" X 50'-0"

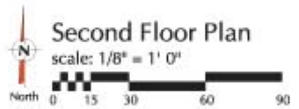


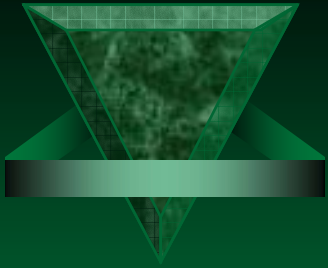
2nd Floor Plan



SECOND FLOOR AREA: 7,050 S.F.
LEASABLE SPACE: 4,939 S.F.

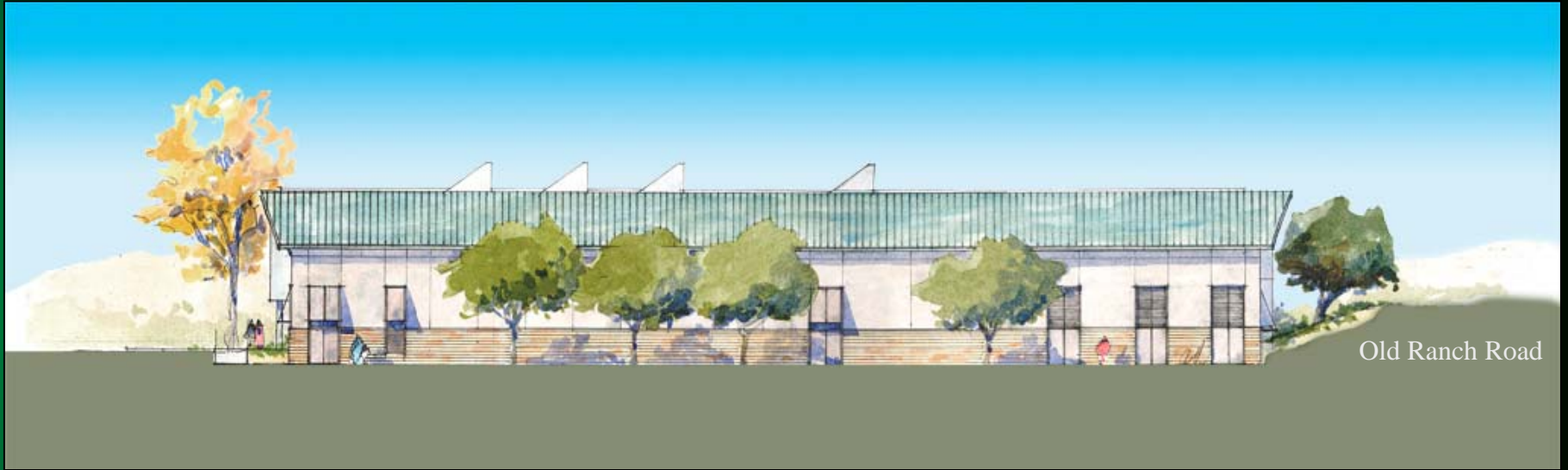
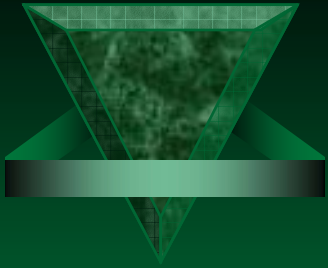
OCCUPANCY LEGEND	
	GYM
	LEASABLE SPACE
	MEETING ROOM
	SUPPORT
	LOCKER ROOMS
	EXERCISE ROOMS
	RESTROOM
	CIRCULATION



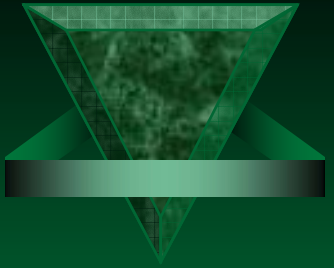


South Elevation

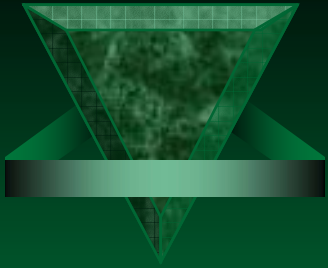
West Branch Street



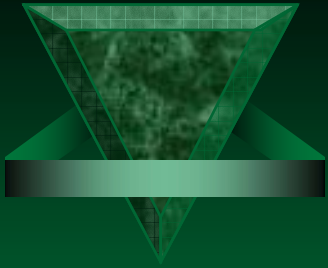
East Elevation



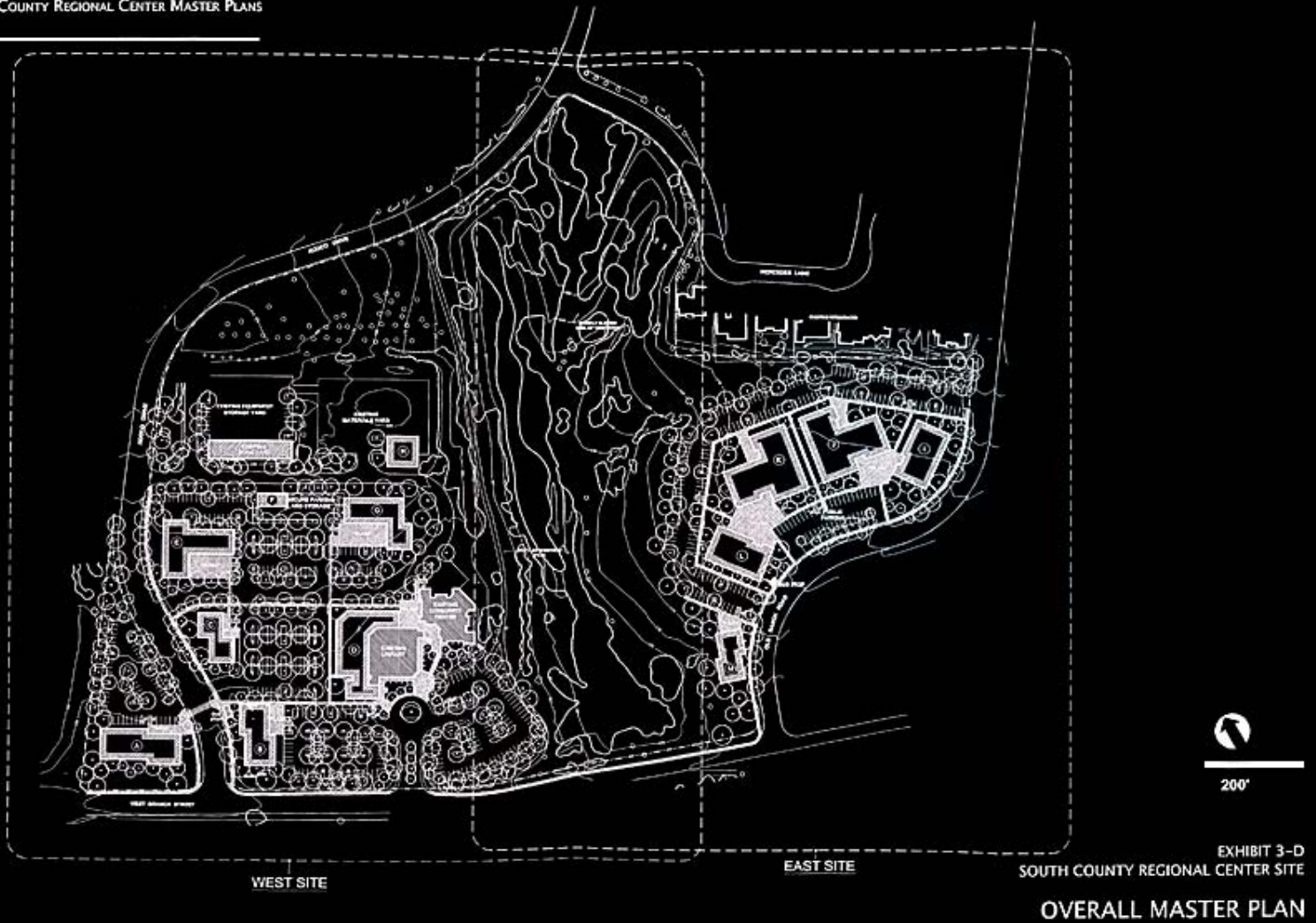
North Elevation



West Elevation



Section A



“Said property shall be used for Municipal Facilities, or with the prior approval of the County Board of Supervisors may be leased to a private non-profit organization for use in fulfillment of a charitable purpose, including youth recreation. If this restriction is violated, Parcel 2 shall revert back to county.”



Looking West along West Branch Street



Looking East at West Branch Street & Old Ranch Road



Looking South Down Old Ranch Road



Looking South from Residential Area



Looking Southwest from Residential Area

The Courthouse SPORTS COMPLEX

Arroyo Grande, California



Fall 2005