







ARCHITECT'S SEAL  
 REGISTERED ARCHITECT  
 STATE OF CALIFORNIA  
 LICENSE NO. 109545  
 APPL. 03-109545  
 RC \_\_\_\_\_ TS \_\_\_\_\_ SS \_\_\_\_\_  
 DATE \_\_\_\_\_

REVISION

PROJECT TITLE  
**PASO ROBLES  
 PRESCHOOL**  
 FIRST 5 SCHOOL  
 READINESS/FAMILY  
 RESOURCE CENTER  
 PHASE I

SHEET TITLE  
**ENLARGED  
 SITE PLAN**

DRAWN BY  
 JAMES M. MOORE

JOB NUMBER: 050333.01  
 SHEET

**A-101.1**  
 DATE: December 20, 2005

**NUMBERED NOTES**

- 1 CONG. SLAB PER 1/4"=1'-0" FOR FUTURE STORAGE SHED
- 2 ACC. BOARD TO READ "PASSENGER" IN LOADING ZONE. NO PARKING.
- 3 FUTURE PLAYGROUND EXPANSION.
- 4 4" TALL CHAIN LINK PERIMETER FENCING.
- 5 CONTROL JOINTS TYP.
- 6 3" BLUE PAINT ACC. TRAVEL ZONE 8' 3/4" O.C. @ 10' INT.
- 7 ACC. MARKING TOI-WAY SIGNAGE
- 8 ACC. H/AD DRINKING FOUNTAIN
- 9 MOBY SIGNAGE
- 10 LINE OF ROOF OVERHANG ABOVE
- 11 RAISED PLANTER
- 12 RAISED PLANTER TO BE PLACED BY TRANSFORMER STATION BY OWNER - NOT A PART OF THIS APPLICATION.
- 13 FUTURE CANOPY SHADE STRUCTURE ABOVE BY OWNER
- 14 SAND BOX
- 15 ASPHALT CONCRETE PAVING PER CIVIL DRAWING
- 16 12" WIDE GROOVED BORDER ON LEVEL SURFACE - TOP OF THE RAMP TYP. - PROVIDE VENTILATION - PROVIDE HINGED DOOR - 3'-6" O.C.
- 17 CONCRETE CURB PER CIVIL DRAWING
- 18 NEEL DRIVEWAY PER CIVIL DRAWING
- 19 TYPICAL TRACK WITH ACCENT 8" RIMMED CONCRETE - COORDINATE PATTERNS WITH ARCHITECT
- 20 GALVANIZED STEEL HOOPS TO DRIVE UNDER
- 21 12" WIDE GROOVED BORDER ON LEVEL SURFACE - TOP OF THE RAMP TYP. - PROVIDE VENTILATION - PROVIDE HINGED DOOR - 3'-6" O.C.
- 22 TACTILE EXIT SIGN
- 23 12" HIGH WHITE LETTERS
- 24 12" DIA. PVC CONDUIT SUBVERT UNDER CONCRETE/ASPHALT FOR FUTURE IRRIGATION.
- 25 4" DIA. RING BOLLARDS AT HYAC UNITS
- 26 9" RIBS AT 4' EACH, 12" HEADS
- 27 5" RIBS AT 4' EACH, 12" HEADS
- 28 HANDGRAB AT BUILDING
- 29 WHEEL STOP
- 30 PARKING STRIPE - PAINT WHITE
- 31 ALLAN BLOCK RETAINING WALL PER CIVIL DRAWINGS AND DETAIL A-A-502
- 32 FUTURE RUBBER PLAYGROUND SURFACE OVER EXISTING BY OWNER - NOT A PART OF THIS APPLICATION

**UNDERFLOOR VENTILATION**

BUILDING SIZE = 47'-0" x 10'-0" x 13' 50" / 80 = 13.5 SQ FT / REQ'D  
 (A) 16" x 4'-0" = 55 SQ FT, X 1 VENT = 55 SQ FT. - SEE 3/A-01  
 (B) 36" x 4'-0" = 252 SQ FT, X 3 VENTS = 756 SQ FT. PROVIDED

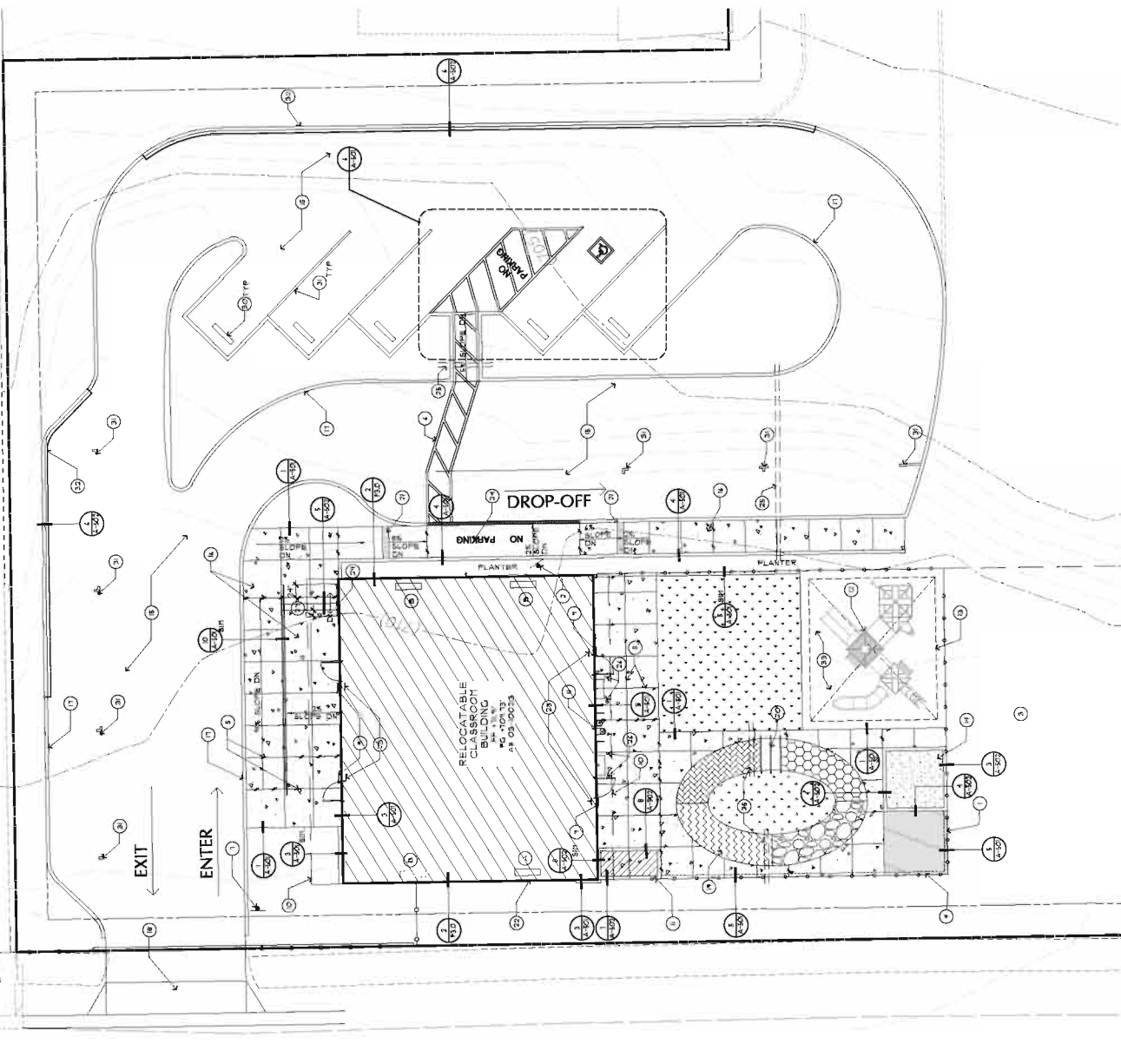
**LEGEND**

- PARCEL BOUNDARY
- EXPANSION JOINT
- BANDBOX
- GRASS - SOIL PREP. BEDDING, IRRIGATION BY LAND ASH BY OWNER
- CONCRETE PLANTER
- NETE BUILDING
- RAISED PLANTER



**ENLARGED SITE PLAN**

SCALE: 1/8" = 1'-0"  
 0 4 8 16 FEET





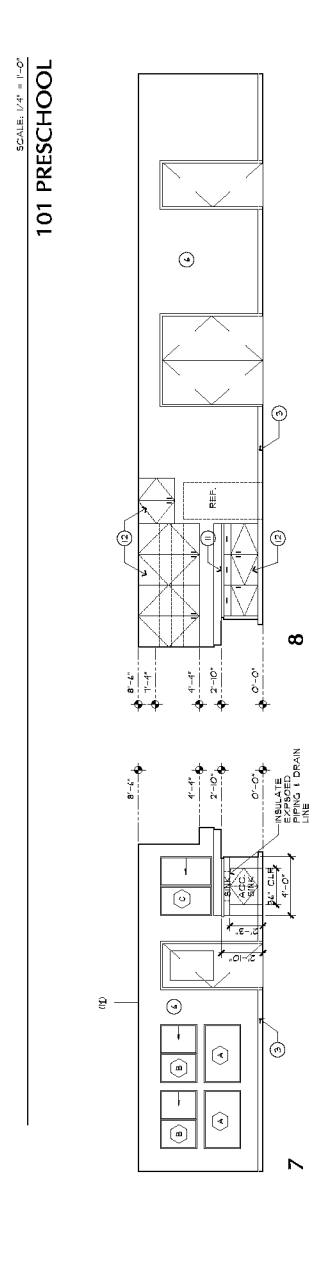
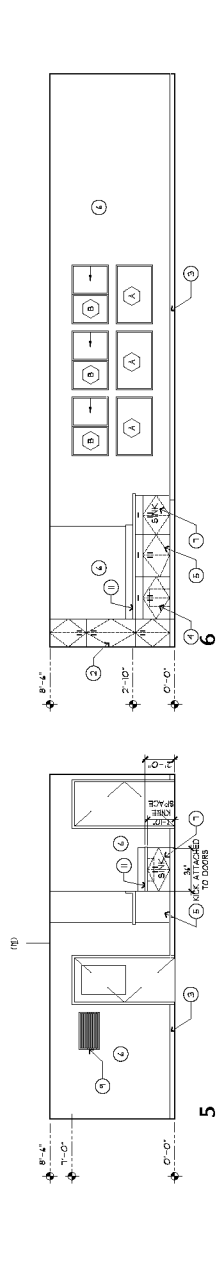
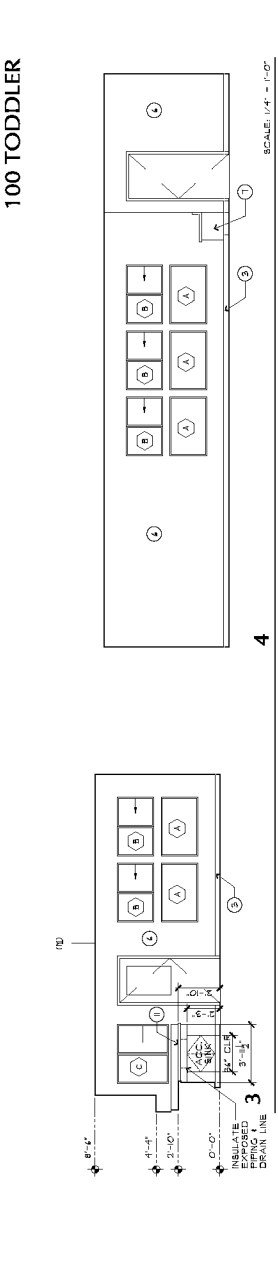
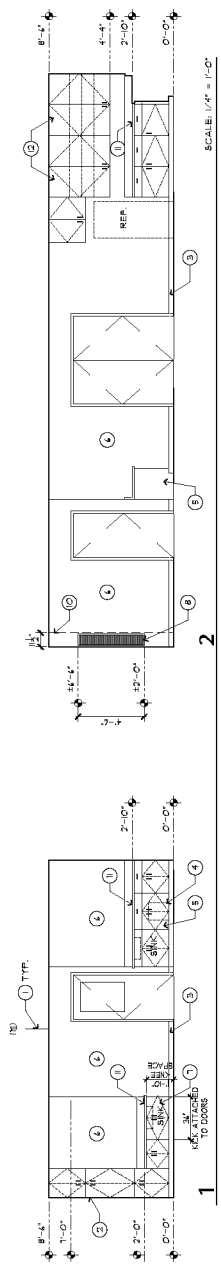


**NUMBERED NOTES**

- 1 MODULAR JOINT.
- 2 STORAGE AREA.
- 3 RUBBER TOP SET BASE.
- 4 WATER HEATER BEHIND LOCKABLE CABINETS TO CORNER.
- 5 CABLEING/CHANGING AREA.
- 6 PATCH VINYL TACKBOARD CLASS I FINISH TO MATCH EXISTING AS NEEDED.
- 7 PLASTIC LAMINATE LOW SINK BASE.
- 8 18"x4'-4" RETURN AIR GRILL.
- 9 18"x4'-4" RETURN AIR GRILL.
- 10 RETURN AIR CHASE BEYOND PLASTIC LAMINATE COUNTERTOP.
- 11 PLASTIC LAMINATE CABINETS.
- 12 SEE WINDOWS SCHEDULE - SHEET A-101

**GENERAL NOTES**

- 1. ALL CABINET DOORS & DRAWERS TO INCLUDE LOGOS





AGENCY APPROVAL  
IDENTIFICATION STAMP  
DIV. OF PERMITS, CONTRACTS  
AND INSPECTION SERVICES  
FILE NO. 60  
APPL. 03-109545  
RC \_\_\_\_\_ SS \_\_\_\_\_  
DATE \_\_\_\_\_

REVISION  
▲ ADDENDUM #2 - 01-01-04

THIS DOCUMENT IS NOT TO BE REPRODUCED OR TRANSMITTED IN ANY FORM OR BY ANY MEANS, ELECTRONIC OR MECHANICAL, INCLUDING PHOTOCOPYING, RECORDING, OR BY ANY INFORMATION STORAGE AND RETRIEVAL SYSTEM, WITHOUT THE WRITTEN PERMISSION OF THE ARCHITECT.  
MADE IN THE UNITED STATES OF AMERICA

PROJECT TITLE  
**SLOCOE  
Pasos Robles  
Preschool**  
FIRST 5 SCHOOL  
READINESS/FAMILY  
RESOURCE CENTER  
PHASE I

SHEET TITLE  
**INTERIOR  
ELEVATIONS**

JOB NUMBER: CSC233.01  
SHEET

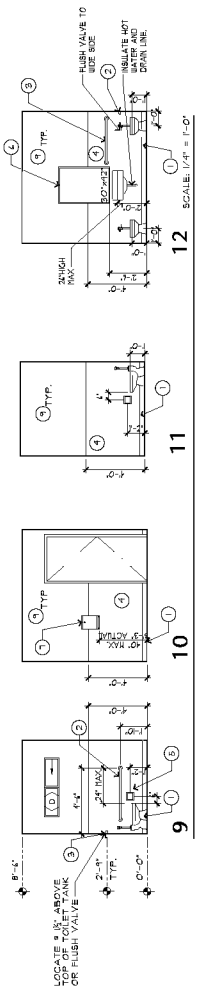
**A-204**  
DATE: December 20, 2005

**NUMBERED NOTES**

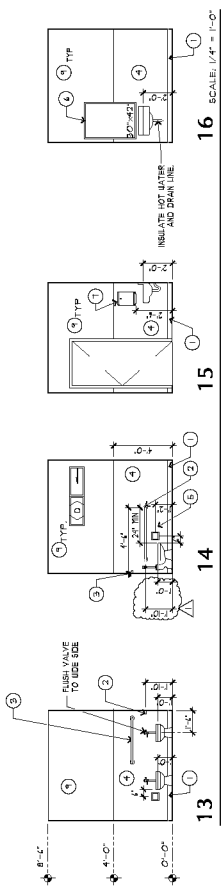
- ① 1/2" COVERED SHEET VINYL BASE
- ② 1/2" GRAB BAR
- ③ 3" GRAB BAR
- ④ 18" HIGH FRP LAINSCOT
- ⑤ TOILET PAPER DISPENSER
- ⑥ HERROR
- ⑦ PAPER TOWEL DISPENSER (PTD)
- ⑧ PAINT WATER RESISTANT GYPSPAIN BOARD
- ⑨ SANITARY NAPKIN DISPENSER (SND)
- ⑩ SEE UNDOOR SCHEDULE - SHEET A-40

**GENERAL NOTES**

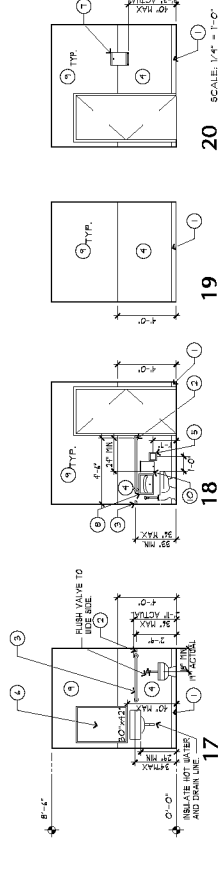
- 1. ALL WATER CONNECTIONS TO BE AMERICAN STANDARD APPROVED EQUAL TO TODDLER & PRESCHOOL RESTROOMS ONLY



12 SCALE: 1/4" = 1'-0"  
**102 TODDLER RESTROOM**



16 SCALE: 1/4" = 1'-0"  
**104 PRESCHOOL RESTROOM**



20 SCALE: 1/4" = 1'-0"  
**103 STAFF RESTROOM**





